

Transforming Cities Fund

Selby Station Gateway

Delivered in
partnership by:



Funded by:



Zone 3: Ousegate

Ousegate is a key part of the local highway network running alongside the river Ouse between the A19 (New Street Bridge) and Denison Road. The existing infrastructure is not as good as it could be particularly in relation to walking and cycling.

We want to invest in this road by making some key changes.

- Improve road safety at the Ousegate/A19 junction by providing new pedestrian crossings
- Generally improve road safety along Ousegate by creating a 20mph zone
- Make part of Ousegate one way (northbound) between Cowie Drive and the A19
- Remove some on street parking
- Create safe space for cyclists

The proposals will impact on some short stay on street parking and impact traffic flows in the area with eastbound vehicles encourage to take an alternative route.

Zone 3 Plan A: Shows the existing layout and some of the challenges and issues we are aware of.

Zone 3 Plan B: Shows the proposed layout with suggested changes. Where possible we have tried to communicate what impacts the proposals may have.

Zone 3 Visualisation: Shows what the layout of Ousegate could look like looking west towards the A19.

If interested in this zone make sure to check out our plans for the station building itself (Zone 1), plans for the Ousegate Wharf (Zone 6) and Cowie Drive (Zone 2).

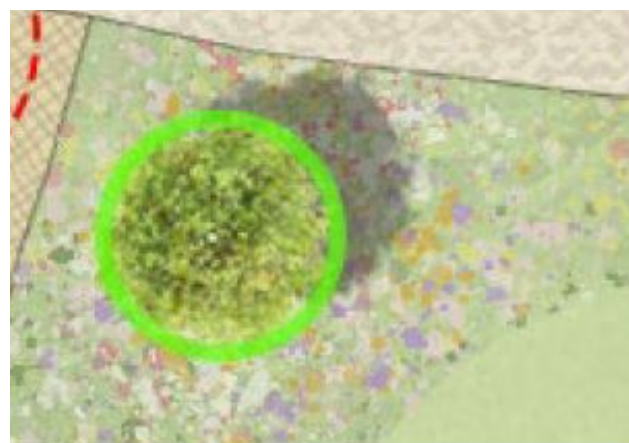
Zone 3: Key



Existing trees that will remain



Blue badge parking bays



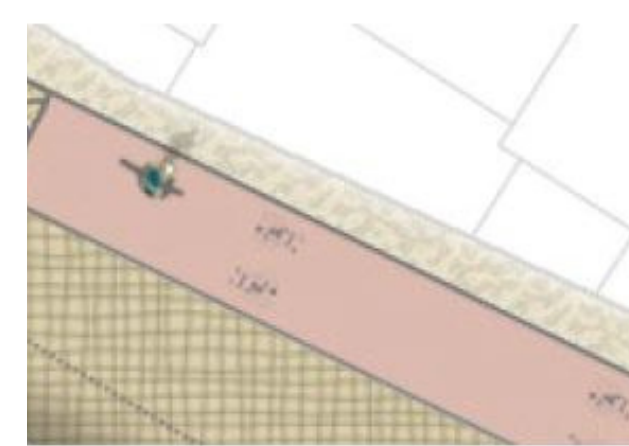
New trees we want to plant



Development opportunity

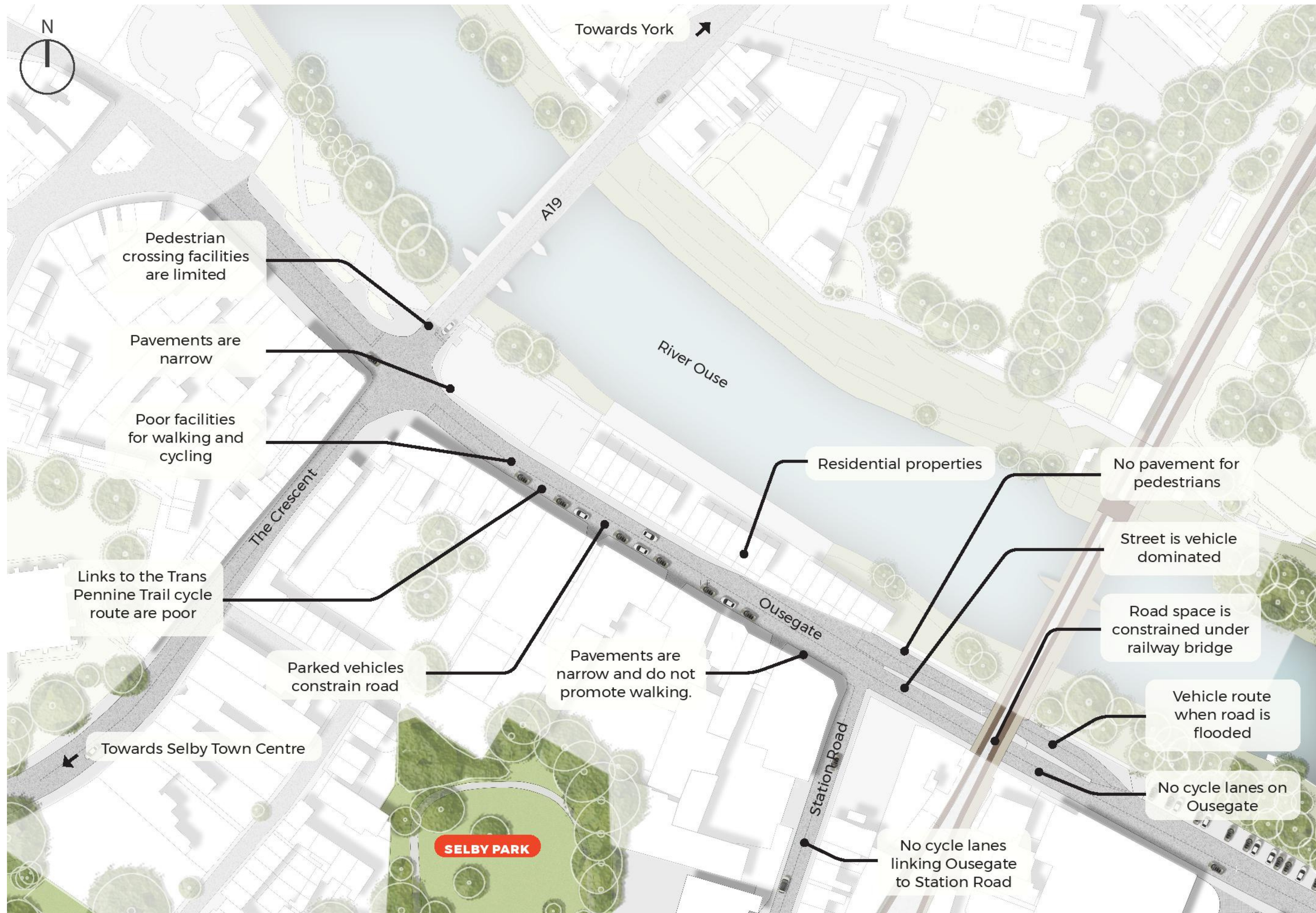


Trees which may need to be removed

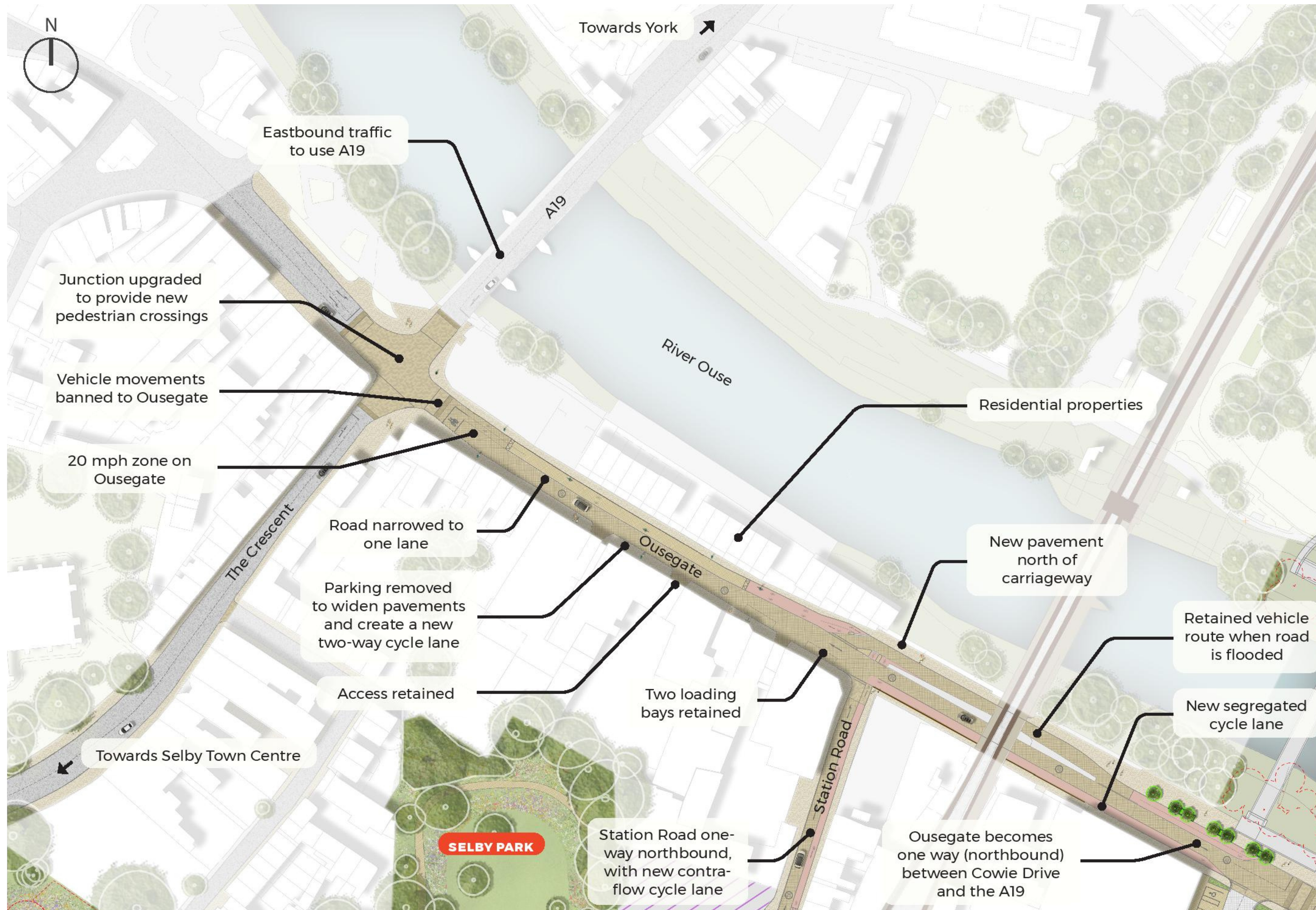


Cycle lanes

Zone 3: Plan A: Ousegate (existing)



Zone 3: Plan B: Ousegate (proposed)



Zone 3: Visualisation



Zone 3: Frequently Asked Questions

Why make Ousegate one-way for vehicles?

There is limited space available and making a section of Ousegate between Cowie Drive and the A19 one way for vehicles will help create more space for pedestrians and cyclists. Clearly this is a trade off but this is to encourage people to travel on foot and by bike to/from the station and more generally across Selby.

How will these proposals impact on parking along Ousegate?

Short stay parking will be removed to create space for the new segregated cycle lane and reduce car dominance in the area.

What changes will be made to the A19/Ousegate junction?

The south-east bound movement onto Ousegate will be banned. Cars will no longer be able to make this movement from either Water Lane, New Street or the A19 Toll Bridge.